



The
Forum
Norwich

Millennium
Plain NR2 1TF

8 - 15 May
2026

210th
ART
EXHIBITION

CATALOGUE



www.norfolkandnorwichartcircle.org.uk



A memory from last year...

May 2025: a view of the Preview Evening of the 208th NNAC Art Exhibition at the Forum Norwich



WELCOME to the 210th NNAC Art Exhibition at The Forum Norwich!

There are 98 works of art from 48 artists on show at our return to the Forum Norwich, representing a diverse range of mediums and artistic styles and genres - all demonstrating the qualities that sets the Art Circle apart.

Thanks go to our special guest opening the exhibition: The Lord Mayor of Norwich, Paul Kendrick.

Thanks also go to Council Members and all involved in the planning and installation of this super exhibition, and to Jarrolds Department Store, who kindly agreed to donate the prize for 'best in show' feature. Also to Kim Sedgwick and her team at the Forum for their help and support.

Together with the team at Council, we will continue to work to raise the standards of art in the region, and I am proud of the commitment of members whose dedication is the force that drives the Circle forward.

We are, as always, very grateful of the friendship and support given to us by Jenny Hand (Director) and her team at the Munnings Museum, Dedham,

Don't forget to visit our website for news of future exhibitions, demonstrations, trips, life drawing and events: www.norfolkandnorwichartcircle.org.uk



Ally Zawadzki

Chairman NNAC



Catalogue of works

Eleanor Alison

- | | | |
|---|-----------------------|------|
| 1. <i>North Transept on Norwich Cathedral</i> | Scratchboard | £220 |
| 2. <i>Eagle Owl</i> | Scratchboard and inks | £180 |
| 3. <i>Misty Lake</i> | Oil on board | £220 |



North Transept on Norwich Cathedral

Marian Auger

- | | | |
|--|-----|------|
| 4. <i>River Mouth, Looking Back on Breydon, Gt. Yarmouth</i> | Oil | £175 |
|--|-----|------|



River Mouth, Gt. Yarmouth

Diana Campbell

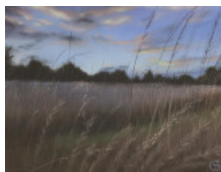
- | | | |
|-------------------------|---------------|------|
| 5. <i>Adrian</i> | Pastel pencil | £290 |
| 6. <i>The Student</i> | Oil | £290 |
| 7. <i>Reading Keats</i> | Oil | £290 |



The Student

Selen Cinus

- | | | |
|----------------------------|----------------------|------|
| 8. <i>Twilight - UK</i> | Soft pastel on paper | £600 |
| 9. <i>Twilight - India</i> | Soft pastel on paper | £180 |



Twilight UK

Paul Clarke

- | | | |
|---------------------------------|-------------------|------|
| 10. <i>Winter Woodland Walk</i> | Oil on wood panel | £150 |
|---------------------------------|-------------------|------|



Winter Woodland Walk

Naomi Clements-Wright

- | | | |
|-----------------------------|-----|------|
| 11. <i>Bursting for Sun</i> | Oil | £750 |
| 12. <i>Taste of Autumn</i> | Oil | £650 |
| 13. <i>Ellingham Mill</i> | Oil | £650 |
| 14. <i>The Wooden Heart</i> | Oil | £750 |



Bursting for Sun

Issy Coe

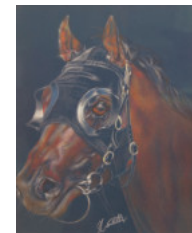
- | | | |
|---------------------------|--------|------|
| 15. <i>Norfolk Sunset</i> | Pastel | £150 |
|---------------------------|--------|------|



Norfolk Sunset

Janna Cossettini

- | | | |
|---|-------------------------|-------|
| 16. <i>Beneath Brooding Skies</i> | Graphite on paper | £1150 |
| 17. <i>Duel Amidst Gathering Storms</i> | Graphite on toned paper | £1150 |
| 18. <i>The Sporting Pair - Side by Side and Skyward</i> | Pencil on paper | £1150 |
| 19. <i>The Racehorse</i> | Pencil on blue paper | £580 |



The Racehorse

Interested in becoming a member of NNAC? Visit www.norfolkandnorwichartcircle.org.uk



Eleanor Alison

Oil, Scratchboard, Pen and Wash artworks

eleanor.alison@btinternet.com



eleanor.alison.artist



This page is sponsored by

Issy Coe

Artist/Tutor

Issy runs classes and workshops from her studio and also carries out demos and workshops for art groups, societies

issyart210@btinternet.com



Malcolm Cudmore

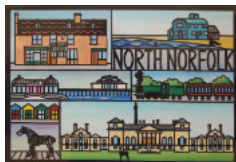
- 20. *A Very Patient Man* Oil on board £295
- 21. *Barton Turf Staithe* Oil on board £195



Barton Turf Staithe

Suzy Dobson

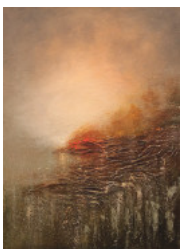
- 22. *A Postcard from North Norfolk* Mixed media (papercut) £205
- 23. *A Visit to Norwich* Mixed media (papercut) £205



A Postcard from North Norfolk

Alyona Dyer

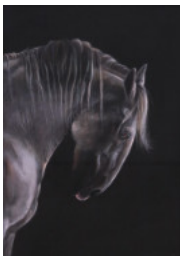
- 24. *Hanging Valley* Textured paste, silk pieces, ceramic stucco, acrylic ink £300
- 25. *Awakening. First Light* Textured paste, ceramic stucco, small stones, acrylic ink, bronzing £350



Hanging Valley

Nicola Eastell

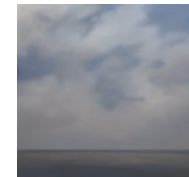
- 26. *O Chefe* Pastel £875
- 27. *Tactus Lucis* Pastel £675
- 28. *Tadeu* Pastel £875
- 29. *Inacio* Pastel £550



O Chefe

Shirley Easton

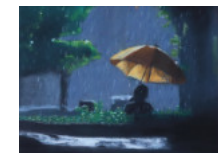
- 30. *Books and Windows* Acrylic £495
- 31. *Open Sky* Oil £995



Open Sky

Stella Eglington

- 32. *Umbrella* Pastel £200
- 33. *Rain* Pastel £200



Umbrella

Barry Ellis

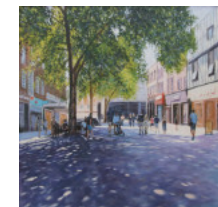
- 34. *Female Kingfisher* Watercolour £165



Female Kingfisher

David Harrison

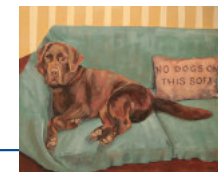
- 35. *Early Morning* Acrylic and guache £725
- 36. *Sunny Morning* Acrylic on linen canvas £795
- 37. *Morning* Acrylic and guache £725
- 38. *Tourists, La Rambla, Barcelona* Acrylic and guache £725



Sunny Morning in Norwich

Jan Heath

- 39. *Am I Boverred?* Acrylic £185



Am I Boverred?



Best wishes to all members on another great exhibition


Malcolm Cudmore

www.malcolm-cudmore.com


[@malcolmcudmore](https://www.instagram.com/malcolmcudmore)



Check in on the NNAC on social media...



[norfolkandnorwichartcircle](https://www.facebook.com/norfolkandnorwichartcircle)



[thenorfolkandnorwichartcircle](https://www.instagram.com/thenorfolkandnorwichartcircle)



A Portrait by Julie
will be something to treasure!

Please contact me for any requirements.
07795562580
hodgson.ja@btinternet.com
www.portraitsbyjulie.co.uk



Julie Hodgson

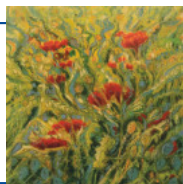
- 40. *Lifeboat Ready* Acrylic £165
- 41. *Sunset Over the Bure* Acrylic £180
- 42. *Summer Hare* Acrylic £140
- 43. *Buckenham View* Acrylic £160



Summer Hare

Janet Hovard

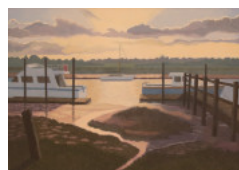
- 44. *Field Jewels* Oil pastel £150



Field Jewels

Keith Judge

- 45. *Southwold Harbour, Suffolk* Oil on canvas £650
- 46. *Swans on the River Bure* Oil on canvas £550



Southwold Harbour Suffolk

Jan Lacey

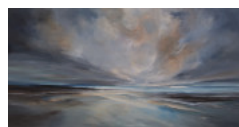
- 47. *Pot and Plums* Oil £150
- 48. *Copper Bowl* Oil £150
- 49. *Pot and Cherries* Oil £150



Pot and Plums

Sarah Long

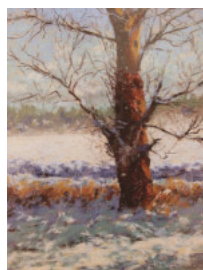
- 50. *Storm Light* Acrylic £895
- 51. *Between Tides* Acrylic, ink, pastel £240



Storm Light

Ruth Mann

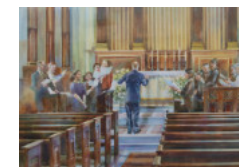
- 52. *Milly Meets the Giant* Pastel £325
- 53. *Sunlit* Pastel £295
- 54. *January* Pastel £195
- 55. *By Horstead Mill* Pastel £125



January

Gilly Marklew

- 56. *Spiralling Snow* Watercolour, salt resist, gum arabic £150
- 57. *The Choir* Watercolour £250



The Choir

John Mortimer

- 58. *Veranda Terrace* Watercolour £200



Veranda Terrace

Jan Motley

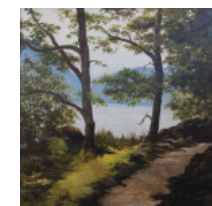
- 59. *Over the Water* Collograph £120
- 60. *Vase Group* Linocut £85
- 61. *Shadow Flight* Textile £85



Over the Water

Richard Motley

- 62. *View Overlooking Grassmere* Graphite £120
- 63. *Far Easedale Path* Graphite £120
- 64. *Sunlit Path Grassmere* Oil £290




Sunlit Path Grassmere

John Patchett

- 65. *Pin Mill Morning* Pastel £425
- 66. *Majestic Morning* Pastel £385
- 67. *Trinity College, Cambridge* Pastel £385
- 68. *Cherry Blossom in the Close* Pastel £385



Trinity College Cambridge

Interested in becoming a member of NNAC?
 Visit www.norfolkandnorwichartcircle.org.uk  **JOIN NOW**

John Ratcliffe

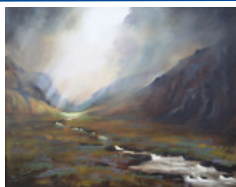
- 69. *A Nightmare on Elm Hill* Oil on canvas £115
- 70. *The Tradesman's Entrance* Pen, ink, watercolour £65



A Nightmare on Elm Hill

Jacqueline Smerdon

- 71. *The Glorious Glen* Oil £225
- 72. *In the Jungle* Watercolour and pen £195



The Glorious Glen

Linda J Stephenson

- 73. *Norwich Cathedral* Acrylic £275



Norwich Cathedral

Keith Martin Stokes

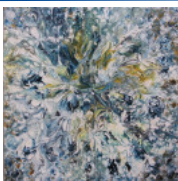
- 74. *Norwich: Cathedral Close* Oil on stretched canvas £475
- 75. *Garden Pots in Spring* Oil on canvas board £450
- 76. *An Absence of Sitters* Oil on canvas board £450
- 77. *Nymph: Charlottenburg Palace* Oil on canvas board £450



An Absence of Sitters

Susan Lynda Taylor

- 78. *Beautiful* Acrylic and mixed medium £300



Beautiful

Maryna Tsymbol

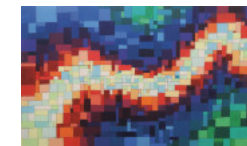
- 79. *Elm Hill Street* Oil on canvas £150



Elm Hill Street

Elaine Vincent

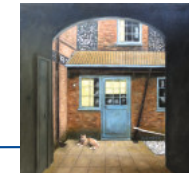
- 80. *Uplift* Acrylic £395



Uplift

Ian West

- 81. *My Yard* Oil £300



My Yard

Julie Whittaker

- 82. *Frozen: Wintry Morning* Acrylic £175
- 83. *Night-time Visitor* Acrylic £180
- 84. *Gressenhall: Suffolk Punch* Acrylic £220



Night-time Visitor

Sue Willmer

- 85. *Tranquil Space* Oil £295
- 86. *Woodland Walk* Oil £325



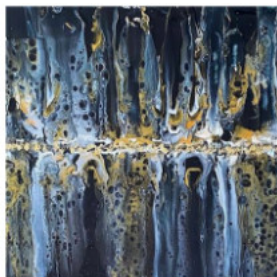
Tranquil Space

Interested in becoming a member of NNAC?
Visit www.norfolkandnorwichartcircle.org.uk

JOIN NOW



SUSAN LYNDA TAYLOR ARTIST
commissions - landscape -
abstract - mixed medium
contact: su.tay@me.com
<https://susanlyndataylorart.co.uk>
- Instagram: Susan Lynda
Taylor



Sue Willmer

Painting in oil, acrylic and watercolour and a former member of the Society of East Anglian Watercolourists, the Institute of East Anglian Artists and past Chairman of the Norfolk and Norwich Art Circle.

Commissions undertaken

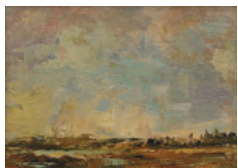
Email: wycckdwyck@goopiesplace.plus.com

Website: www.suewillmerart.com



Alice Wilton

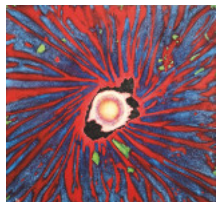
- 87. *Wetland, Norfolk Sky* Oil £225
- 88. *Perfect Day* Oil £225



Wetland, Norfolk Sky

Ally Zawadzki

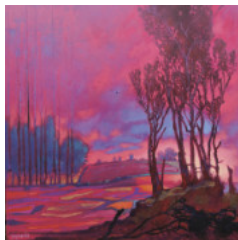
- 89. *Birth of Creation* Oil on cement £450
- 90. *Immaterial Fern* Oil on cement £280
- 91. *Blue Gyre* Oil on cement £150



Birth of Creation

Paul Zawadzki

- 92. *Covehithe Cliffs* Oil on rusted steel £600
- 93. *Cracks in the Trees* Oil on canvas £280
- 94. *Guardian of the Lake* Oil on canvas £280



Covehithe Cliffs

CONTEMPORARY

Paul & Ally Zawadzki

www.artbear.co.uk
paulzawadzki@artbear.co.uk
ally.m@artbear.co.uk
 07786957395

CONTEMPORARY

LANDSCAPES

ART/SCULPTURE

CONTEMPORARY

Proud to sponsor the 210th NNAC Art Exhibition

Check in on the NNAC on social media...

[norfolkandnorwichartcircle](https://www.facebook.com/norfolkandnorwichartcircle)

[thenorfolkandnorwichartcircle](https://www.instagram.com/thenorfolkandnorwichartcircle)

Interested in becoming a member of NNAC?
Visit www.norfolkandnorwichartcircle.org.uk

JOIN NOW

Sculpture

Clive

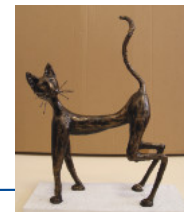
- 95. *Pinned* Wood, brass, gold leaf, acrylic, glass £300



Pinned

Jean Kiekopf

- 96. *'Purr-haps' Cat Sculpture* Steel wire, clay, Powertex, bronze gilt on jesmonite plinth £225



'Purr-haps' Cat Sculpture

Mary Richardson

- 97. *Puffin 2* Cold cast bronze £195
- 98. *Happy Hippo* Calcium carbonate resin £160



Happy Hippo





The Art Trading Company

"...a truly excellent art materials shop"

EAST COAST NET

55 Earsham Street, Bungay, Suffolk NR35 1AF
Open Mon to Sat 10am to 5pm tel: 01986 897939

www.TheArtTradingCompany.co.uk



COACH TRIP TO LONDON

WEDNESDAY 29 JULY 2026

Enjoy a day out in London, travelling down by luxury executive coach.

There will be two drop-off points: Trafalgar Square and, for those wishing to visit the Summer Show, the Royal Academy. While in London you will be free to enjoy the day however you wish.



- ▶ Coach will leave Notcutts Garden Centre, Daniels Road, Norwich NR4 6QP at 8am and arrive in London by 11am
- ▶ Free parking at Notcutts courtesy of Notcutts Garden Centre
- ▶ Return coach departs from London at 4pm

NNAC member £22, Non-member £30, **BOOKING ESSENTIAL:** contact hazelpidsley@hotmail.com

EXCURSION: CHRISTCHURCH MANSION

Wednesday 16 September 2026

Coach trip to Christchurch Mansion, Ipswich, to see the Constable 250 exhibition

Pick up and return from Norwich. Coach ticket only £12 for members and £20 for guests. This will prove to be very popular so early booking recommended.

To book your place please contact Hazel Pidsley - hazelpidsley@hotmail.com



PLEIN-AIR PAINTING DAY: MENDHAM MILL

Wednesday 8 July 2026



A small group of 18 NNAC members have been offered a chance to paint in the grounds of the birthplace of Sir Alfred Munnings, Mendham Mill, Harleston.

If you are a member and are interested in this opportunity, please contact Hazel Pidsley.

Limited places

E-mail hazelpidsley@hotmail.com



2022



at The
Forum
Norwich



2023



2024



2025



calendar 2026

DEMOS (Free for members, £5 non members)

WORKSHOPS 2026

Saturday 5 September

Rachel Thomas

Mixed media with oilse

(£50 members, £70 non members)

BOOKING NOW OPEN!

Unless otherwise stated all events will be held at the Willow Centre, Cringleford, Norwich NR4 7JJ.

Workshops must be booked in advance.

Contact:
hazelpidsley@hotmail.com

> 23 May 2.00 - 4.00pm
Carole Massey Acrylic, gels, mediums, palette knives.

> 27 June 2.00 - 4.00pm
Ian McManus Landscape in watercolour

> 18 July 2.00- 4.00pm
Gareth Jones Seascape in pastel

> 26 September 2.00 - 4.00pm
Julia Tooley Still life in guache

> 24 October 2.00 -4.00pm
Tracey Ross North Norfolk coastal scene in acrylic & mixed media



Our workshops and demos are interesting and varied

MUNNINGS 2026

ART MUSEUM

65 YEARS OF THE MUNNINGS ART MUSEUM

A selection of the many events and exhibitions coming up this year. Visit the website for details and prices.

In 2026 the museum is celebrating its 65th anniversary with two special exhibitions in addition to 150 paintings by Sir Alfred Munnings from its permanent collection. Violet Munnings was the driving force behind both the founding of the museum in 1961 and Munnings' own career from 1920 until his death in 1959. The museum today is as much Violet's legacy as it is that of her husband's.

Castle House,
Castle Hill,
Dedham,
Colchester,
Essex CO7 6AZ

PICTURES FROM PRIVATE COLLECTIONS

A special exhibition charting the museum's history culminates with twenty paintings from Private Collections, many rarely seen in public. These paintings not only demonstrate the versatility of Sir Alfred Munnings as an artist but highlight the continued popularity of his work amongst art collectors today. Pictures include The Woodcutter from 1899, Who's the Lady?, created from a study of Princess Mary and a focus on The Grey Horse, started in 1913 and finished in 1924, a powerful picture full of movement and light.

THE INFLUENCE OF JOHN CONSTABLE

In the 250th anniversary year of the birth of John Constable a second exhibition explores the influence of Constable on the life and work of Sir Alfred Munnings. Both these artists were born in Suffolk, immersed in its natural beauty which steered the course of their painting and could be argued added to Munnings' rejection of Modern Art. Two rooms are filled with Munnings' sky studies and landscapes which Constable would have recognised. A Constable sketchbook – or maybe not!? – is also on display, a gift for Munnings from Violet.

The Munnings Art Museum is open 1.30pm to 4.30pm, Wednesday to Sunday, Bank Holiday Mondays, until 25th October 2026. Tea Room open 10am - 4.30pm.



Lady Munnings opening the Museum in 1961

For more information about the museum, its collection and events visit www.munningsmuseum.org.uk



Norfolk & Norwich Art Circle began as the Norwich Art Circle in 1885, following Crome & Cotman's famous Norwich Society of Artists.

It acquired its full title about forty years later when it merged with the Woodpeckers Art Club, presided over by Nugent Monck. After this, its members increased dramatically. The NNAC has included in its membership artists of national and international acclaim such as Arnesby Brown, Alfred Munnings, Jeffery Camp, Michael Andrews, Bernard Meadows, Edward Seago, Bernard Reynolds and Ian Houston.

The Circle is open to anyone over the age of 17, who is interested in the practice or appreciation of the visual arts and who has connections with East Anglia. Many members have had formal art training, others pursue drawing, painting, printmaking, or sculpture as a pastime. Others simply enjoy learning more about the subject they have always loved. This wide intake leads to a lively exchange of ideas and techniques, providing influences of mutual benefit.

Norfolk & Norwich Art Circle offers a programme of interesting events - usually one activity each month. These include lectures and demonstrations, discussions and critiques, sketching outings, life classes, workshops, social events and exhibitions of selected work by members.

The Circle is run by a Council democratically elected at its Annual General Meeting. The Council organises the yearly programme, and selects the work for the members' exhibitions. Norfolk & Norwich Art Circle is proud of its achievements and its democratic system which has served it well for over one hundred years.

For more information and details of how to become involved, visit our website: www.norfolkandnorwichartcircle.org.uk





LEVETONS



Over 120 years
experience working for
private customers and public museums

Picture Restoration - Conservation
Conservation Mounting & Framing

Tel 01603 743374

Orman House, 17a Grove Avenue, New Costessey, Norwich NR5 0JD

www.levetons.co.uk

info@levetons.co.uk

Norwich Art Supplies



Monday to Saturday
9:30am-5pm

37 St. Benedict's St.,
Norwich, NR2 4PG

01603 620229

www.norwichartsupplies.co.uk