



FROM THE CHAIRMAN

The hot weather is finally upon us - something I'm particularly happy about and feel motivated to do more painting.

The Forum show was a huge success and looked wonderful, so a big thanks to all those involved and those who could attend the Preview. We had very healthy visitor numbers, complimentary comments and sales were good. Planning is now underway for the next exhibition at Becket's Chapel

Wymondham, so keep a look out for selection papers and further information.

Puppy news: little Buddy enjoyed spending an evening at the Preview of our Forum Exhibition!

Ally



Best In Show:

Jan Lacey *Pot and Cherries*

Highly Commended:

Alyona Dyer *Hanging Valley*

Diana Campbell *The Student*

Richard Motley *Far Easedale Path*



A big thanks to our President, Sue Willmer, for the difficult task of choosing works for Best in Show and Highly Commended. Jan Lacey received a generous gift voucher courtesy of Jarrolds Department Store for her painting judged as Best in Show.



DEMO: CAROLE MASSEY - SEASCAPE AND POPPIES

Saturday 23 May

Willow Centre, Cringleford

Over 40 members and guests attended Carole's fascinating demo on Saturday.

For the first half of the afternoon Carole painted a seascape using a variety of palette knives and using various techniques and using different mediums.

After the interval she demonstrated painting a poppy with textured petals.

She had also brought along many examples of her work, and these were passed around the audience who appreciated seeing them close up.

Carole also runs a popular series of painting holidays and this information was on hand at the demo.

Hazel Pidsley



DEMOS & WORKSHOPS

For workshops email Hazel to book your place



calendar 2026

DEMOS (Free for members, £5 non members)

WORKSHOPS 2026 Saturday 5 September Rachel Thomas Mixed media with oilse (£50 members, £70 non members) BOOKING NOW OPEN!	> 27 June 2.00 - 4.00pm Ian McManus Landscape in watercolour
	> 18 July 2.00- 4.00pm Margaret Glass Seascape in pastel
	> 26 September 2.00 - 4.00pm Julia Tooley Still life in gouache
	> 24 October 2.00 -4.00pm Tracey Ross North Norfolk coastal scene in acrylic & mixed media

Unless otherwise stated all events will be held at the Willow Centre, Cringleford, Norwich NR4 7JJ.
Workshops must be booked in advance.
Contact:
hazelpidsley@hotmail.com

ArtChat

Held at: The White Horse, The Street,
Trowse Newton, Norwich, NR14 8ST

E-mail: eleanor.alison@btinternet.com

Tel: 07818215551

Thursday 4 June 'Trees'

Tuesday 14 July 'Is it art?'

The Art Chat meetings are a chance to meet and discuss art related matters with other interested people. We have a theme, which directs ideas into one particular area and helps to focus our thought processes. Meetings are held in the pub, normally in a meeting room or quiet side room by the bar. Some members will arrive early to have food in the bar before we start and obviously alcoholic and non-alcoholic drinks are available. It is a great way to meet and learn from others.

£5 per person if using the larger room. Arrive from 6.30pm for 7pm start. The pub closes at 10pm.

Last few places remaining -
Don't lose out - BOOK NOW!

COACH TRIP TO LONDON

WEDNESDAY 29 JULY 2026

Enjoy a day out in London, travelling down by luxury executive coach.

There will be two drop-off points: Trafalgar Square and, for those wishing to visit the Summer Show, the Royal Academy. While in London you will be free to enjoy the day however you wish.



- ▶ Coach will leave Notcutts Garden Centre, Daniels Road, Norwich NR4 6QP at 8am and arrive in London by 11am
- ▶ Free parking at Notcutts courtesy of Notcutts Garden Centre
- ▶ Return coach departs from London at 4pm

NNAC member £22, Non-member £30, **BOOKING ESSENTIAL:** contact hazelpidsley@hotmail.com

PLEIN-AIR PAINTING DAY: MENDHAM MILL

Wednesday 8 July 2026



Limited to 15
participants

Only 5 places remaining!

NNAC members have been offered a chance to paint in the grounds of the birthplace of Sir Alfred Munnings, Mendham Mill, Mendham, Harleston IP20 0NN. A £5 fee will be payable on the day. Tea and coffee and toilet facilities will be available.

If you are interested in this opportunity, please contact Hazel Pidsley - hazelpidsley@hotmail.com

EXCURSION: CHRISTCHURCH MANSION

Wednesday 16 September 2026

Coach trip to Christchurch Mansion, Ipswich, to see the Constable 250 exhibition

Pick up and return from Norwich. Coach ticket only £12 for members and £20 for guests. This will prove to be very popular so early booking recommended.

To book your place please contact Hazel Pidsley - hazelpidsley@hotmail.com

**PLACES NEARLY GONE!
See the Hay Wain returning to Suffolk for the first time!**



CHARITY INVOLVEMENT OPPORTUNITY



Dereham Meeting Point are asking for donations of artwork for charity

Grand ART Draw 28 August

“We are looking for a painting, drawing or doodle using the medium of your choice on canvas, card or paper, maximum size 8 x 10in or postcard size 6 x 4in.

All art work should be original and signed by the Artist, you are welcome to put whatever notation you wish on the rear of your work. To be completed by 30th June 26

We can arrange to collect your artwork or it can be sent to Dereham Meeting Point, we will, if required, provide a suitable SAE for the art work.

This Draw forms part of Dereham Meeting Points fund raising for 2026 our aim is to raise £100000

this year to ensure the survival of the Charity and allow it to continue to provide an all so necessary service for those in Dereham and further afield. We provide day care for those with Dementia and similar illnesses and a place to meet. Please see the website; derehammeetingpoint.co.uk for further information.

All Artists are invited to join us on the evening of the Grand ART Draw where Wine and Nibbles will be served from 6.30pm with the Great ART Reveal commencing at 7.00pm on FRIDAY 28th August 26.”

Contact Stephen Cross (Volunteer Fund Raiser); stephen.neos5@gmail.com or email them direct: derehammeetingpoint@gmail.com

Art can also be delivered to Norwich Art Supplies, 37 St. Benedicts Street, Norwich

Dereham Meeting Point, Jubilee Suite, St. Withburga Lane Dereham NR19 1ED

MEMBER EXHIBITIONS & EVENTS:



Saturday 6th & Sunday 7th June 2026
Open 10am to 5.30pm - Free Entry

37 Artists open their studios to the public where you can see, experience & buy art.

Art Trail | Exhibition
Open Gardens | Demonstrations
Refreshments

Please see website to plan your visit

www.SouthYareArtTrail.co.uk

Paul & Ally Zawadzki are proud to present this exciting and colourful new exhibition

Ally Zawadzki



Paul Zawadzki



Hillary Barry



28 June - 25 July 2026
open 10am - 5pm

"meet the artists" Thursday 2 July 5pm - 7pm

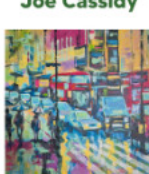
Shirley Easton



Corrin Tulk



Joe Cassidy



Diana Capstick



9 Broad Street
Bungay, Suffolk NR35 1EE
info@broadstreetgallery.co.uk
07786 998 694



HALESWORTH GALLERY

OPEN
MONDAY-SATURDAY 11AM-4PM
SUNDAY 2-4PM
Admission FREE
01986 873064

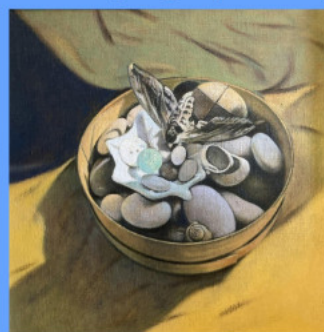
www.halesworthgallery.co.uk

info@halesworthgallery.co.uk

[@halesworth_gallery](https://www.instagram.com/halesworth_gallery)

13th June-8th July

Opening Party 12th June 6pm - 8pm EVERYONE WELCOME



Jane German



Quentin Cowan



Jan Lacey

Steeple End, Halesworth, Suffolk IP19 8LL
Opposite St. Mary's Church

thirteen **moons**

Saturday 20 June
Midday - 9.30pm
Sunday 21 June
10.00am - 4.00pm

Kensington Gardens,
Lowestoft NR33 ODG

new artwork by
**EASTERLY
ARTISTS**

**FIRST
LIGHT
FESTIVAL**




www.easterly.org.uk

@easterlyartists
@easterlyartistsuk

Have you got any art events/exhibitions coming up that you would be willing to share with members?

If so, email paulzawadzki@artbear.co.uk to discuss inclusion in our monthly NNAC newsletter.



RINGLAND VILLAGE HALL,
THE STREET, NORFOLK, NR8 6JA


**LIFE
CLASS**

⇩

EVERY
FORTNIGHT, 2026

STARTING WEDNESDAY, 1ST APRIL

DM FOR AVAILABILITY & TO BOOK:
@NAOMICLEMENTSWRIGHT



£25 FORTHENMORNING, 10AM - 1PM,
INCLUDING COFFEE & CAKE.

FRIENDLY PROFESSIONAL CLASS, ALL
LEVELS WELCOME.

PLEASE BRING YOUR OWN MATERIALS,
SOME PAPER PROVIDED



LIFE DRAWING GROUP

Next session 10 June
No sessions in July and August

**Autumn Term dates: 9 Sept,
14 Oct, 11 Nov, 9 Dec**

**Booking for Autumn Term
will open early September**

The group meets at **The United Reformed Church, Ipswich Road, Norwich NR4 6QR**

Booking for the terms will be advertised. Please contact Sara Edwards at sara@gullmeadow.co.uk

Cost: £30 per term for NNAC Members, £45 for guests.

Model session from 10am, set up from 9.30am, finish 12.45pm. Bring your own equipment.

NNAC OFFICERS AND COUNCIL MEMBERS

If you are interested in becoming a Council Member, or know someone who would be, please speak to a Council Member or contact Hazel Pidsley or Ally Zawadzki. Interested parties are welcome to attend a meeting as an observer.

President: Sue Willmer

Chairman: Ally Zawadzki

Vice Chairman: Malcolm Cudmore

Treasurer: Paul Zawadzki

Secretary: Hazel Pidsley

Webmaster: Ally Zawadzki

Archivist: Richard Motley

Council Members:

Shirley Easton

Barry Ellis

Janet Hovard

Keith Judge

Jan Motley

Richard Motley

Liam Parker

John Ratcliffe

Helen Sant